

# Care Wear Volunteers

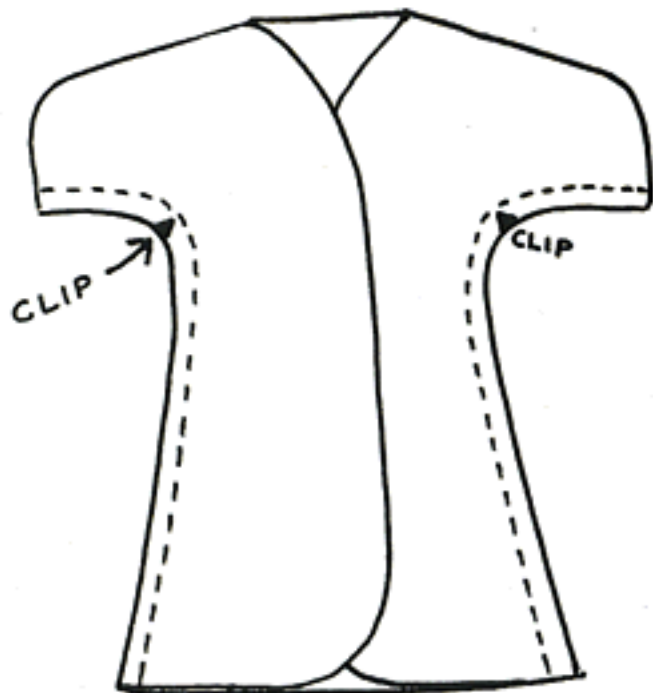
## MULTI-SIZED KIMONO FOR PREMIE BABIES

SUPPLIES: COTTON OR FLAME RETARDANT FLANNEL, COTTON KNITS, ETC.  
VELCRO (TM) OR OTHER HOOK/FASTENER TAPE  
THREAD  
DOUBLE FOLD BIAS TAPE OR SERGER THREAD



### INSTRUCTIONS:

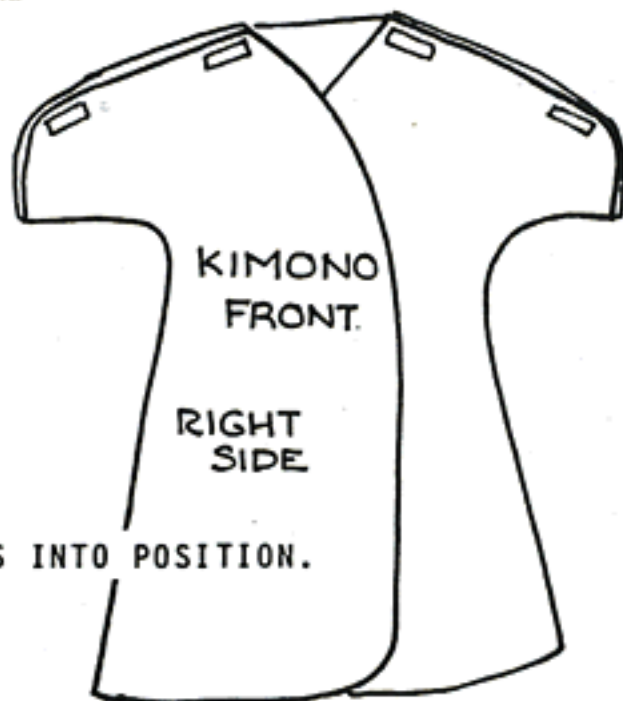
1. TRACE OFF PATTERNS FOR FRONT & BACK FOR EACH SIZE.
2. PIN PATTERN TO FABRIC AND CUT OUT  
NOTE: KIMONO BACK IS CUT ON A FOLD  
KIMONO FRONT IS CUT TWICE
3. WITH RIGHT SIDES TOGETHER, SEW A 1/4" SEAM ALONG THE SIDE/UNDERARM SEAM.
4. SEAM FINISH THAT SEAM BY PINKING, ZIG-ZAG, OR OVERCAST.
5. CLIP THE SEAM ALLOWANCE AT THE UNDER-ARM CURVE.
6. FINISH ALL EDGES OF THE KIMONO BY ANY OF THE METHODS LISTED BELOW:  
(A) BINDING WITH DOUBLE FOLD BIAS TAPE  
(B) OVERCAST STITCHING THE EDGES WITH A SERGER  
(C) TURN UNDER 1/8" AND STITCH IN PLACE  
(D) ZIG ZAG OR OTHER OVERCAST TYPE STITCH.
7. PRESS SEAMS AND EDGES SO THAT THE KIMONO IS FLAT AND FREE OF WRINKLES.



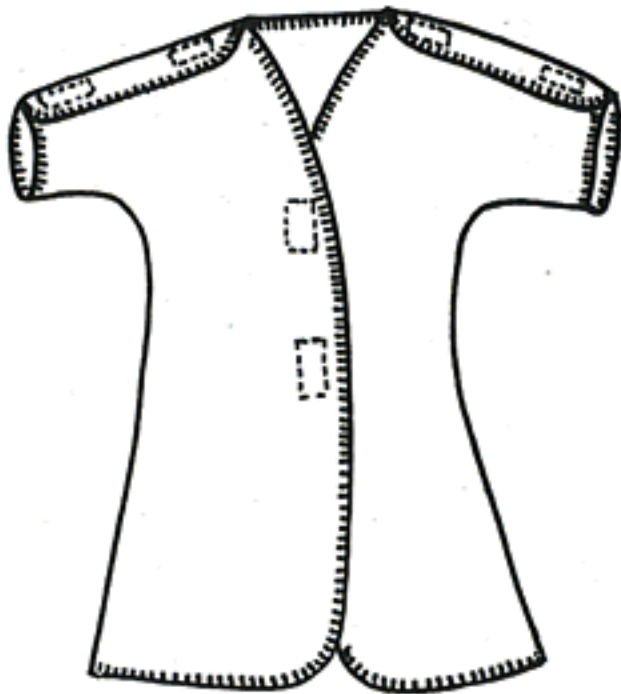
### 8. SHOULDER CLOSINGS

CUT 3/4" WIDE VELCRO (TM) OR OTHER BRAND HOOK/FASTENER TAPE INTO PIECES ABOUT 3/8" IN LENGTH. YOU WILL NEED FOUR SETS OF 3/4" X 3/8" PIECES.

POSITION PIECES ALONG THE SHOULDER-SLEEVE EDGE AS INDICATED BELOW SO THAT WHEN FASTENED, THE KIMONO BACK WILL OVERLAP THE KIMONO FRONT.



SEW VELCRO (TM) PIECES INTO POSITION.



9. FRONT CLOSINGS

Option #1: Cut 3/4" wide velcro into two 1/2" lengths for the front.  
(You will need two sets-see illustration)

Position Velcro fasteners on the front as illustrated at left. Sew each into position.

Option #2: Attach ribbon ties instead of the velcro.

NOTE: This kimono opens down the front and across the shoulder/sleeve so that the preemie babies can be dressed/undressed without disturbing the tubes & monitors.

KIMONO  
BACK

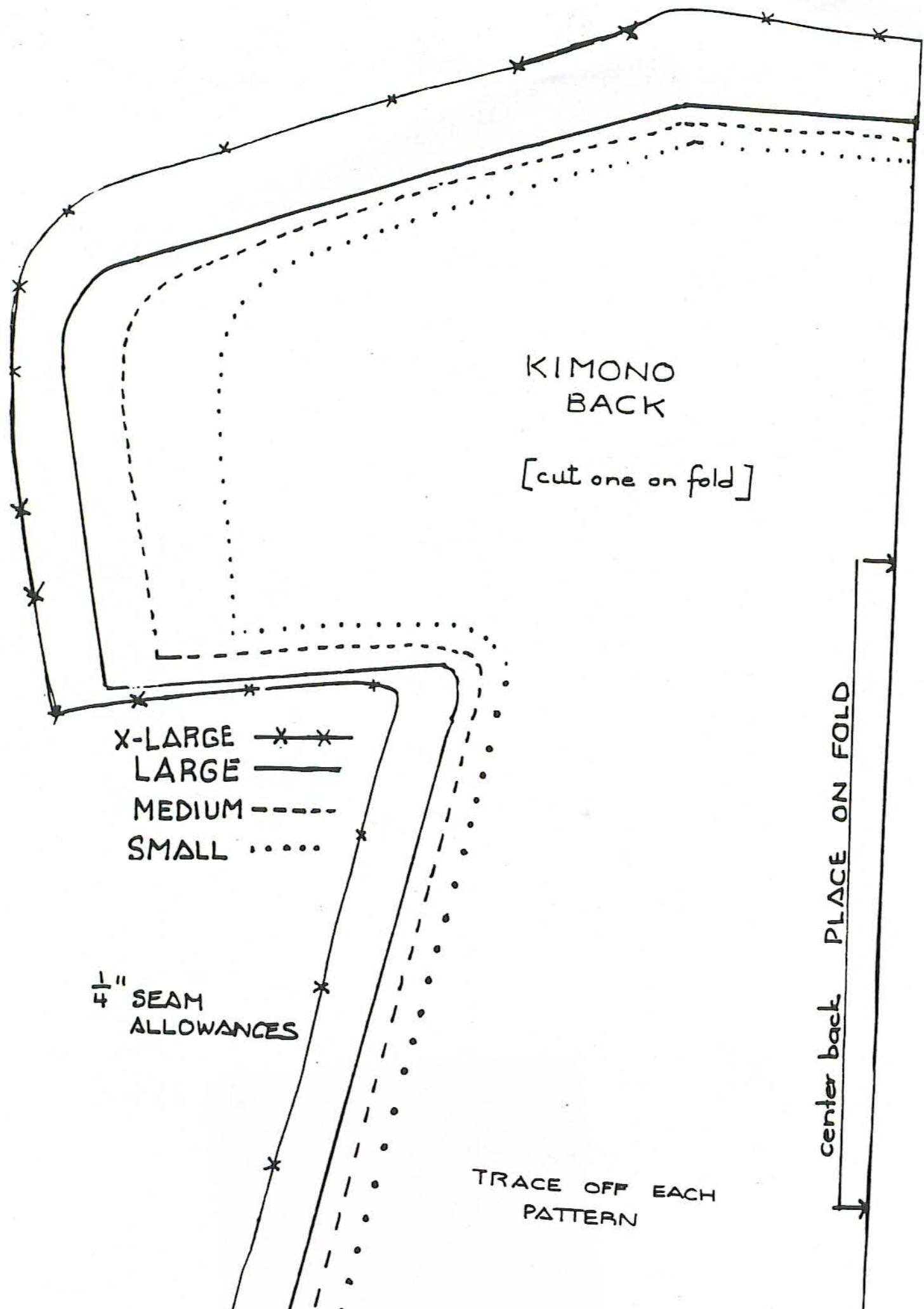
[cut one on fold]

- X-LARGE \* \* \*
- LARGE ———
- MEDIUM - - - -
- SMALL . . . . .

$\frac{1}{4}$ " SEAM  
ALLOWANCES

TRACE OFF EACH  
PATTERN

center back PLACE ON FOLD



KIMONO  
BACK

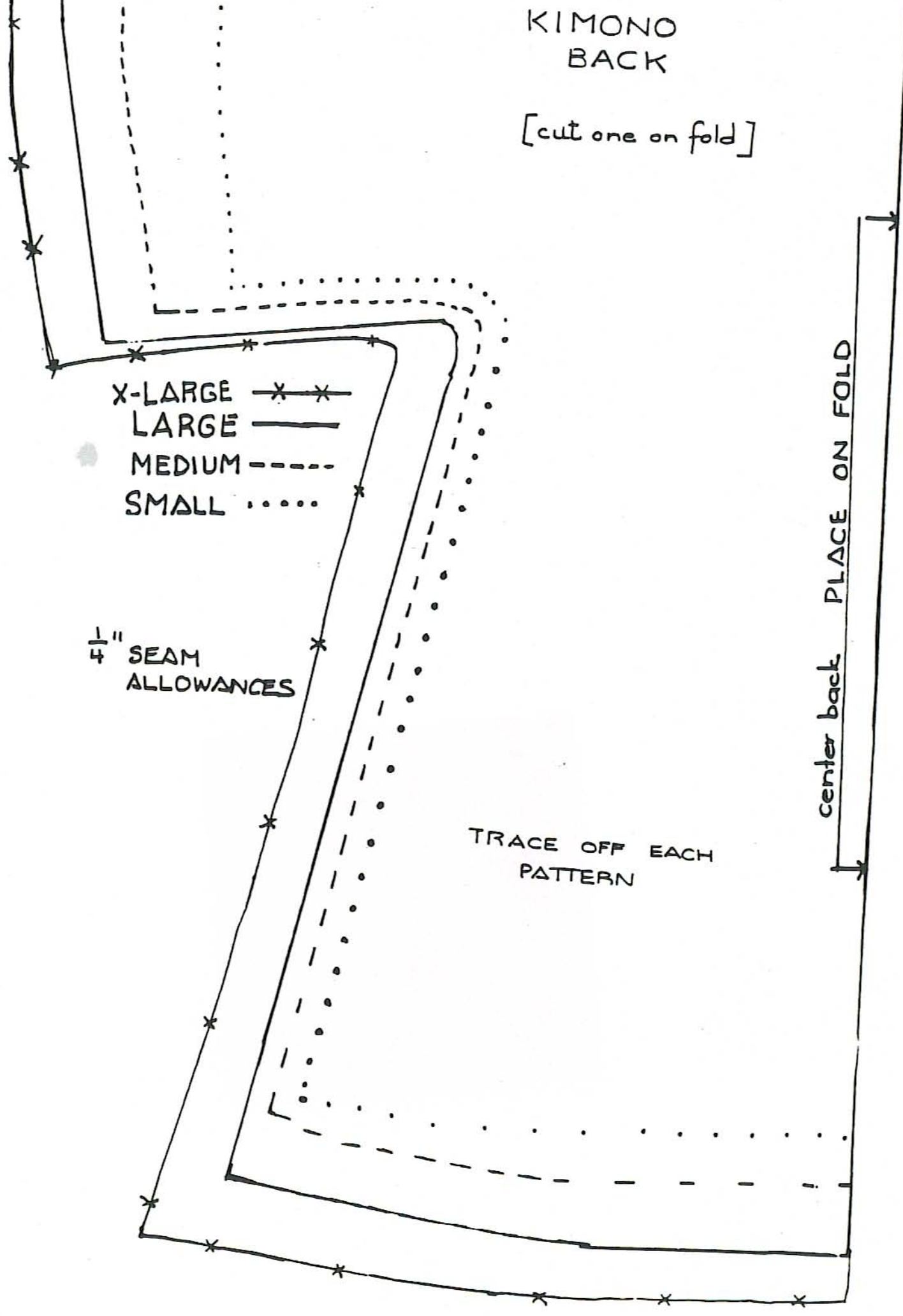
[cut one on fold]

- X-LARGE — \* — \*
- LARGE — — —
- MEDIUM - - - - -
- SMALL . . . . .

$\frac{1}{4}$ " SEAM  
ALLOWANCES

TRACE OFF EACH  
PATTERN

center back PLACE ON FOLD



# KIMONO FRONT

CUT 2

- LARGE ———
- MEDIUM - - - - -
- SMALL ······
- X-LARGE \* \* \*

1/4" seam allowances

center front --- lengthwise grain



# KIMONO FRONT

CUT 2

- LARGE ———
- MEDIUM - - - - -
- SMALL ······
- X-LARGE - \* - \*

1/4" seam allowances

center front - - - lengthwise grain

TRACE OFF EACH PATTERN

