

Preemie Burial Gown

©1992 by Bonnie Hagerman

Side Front

Front Panel

Sizes:

Large ———

Medium - - - -

Small - · - · -

¼" seam allowances included

Cut Two

Grain Line

Preemie Burial Gown

©1992 by Bonnie Hagerman

¼" seam allowances included

Sizes:

Large ———

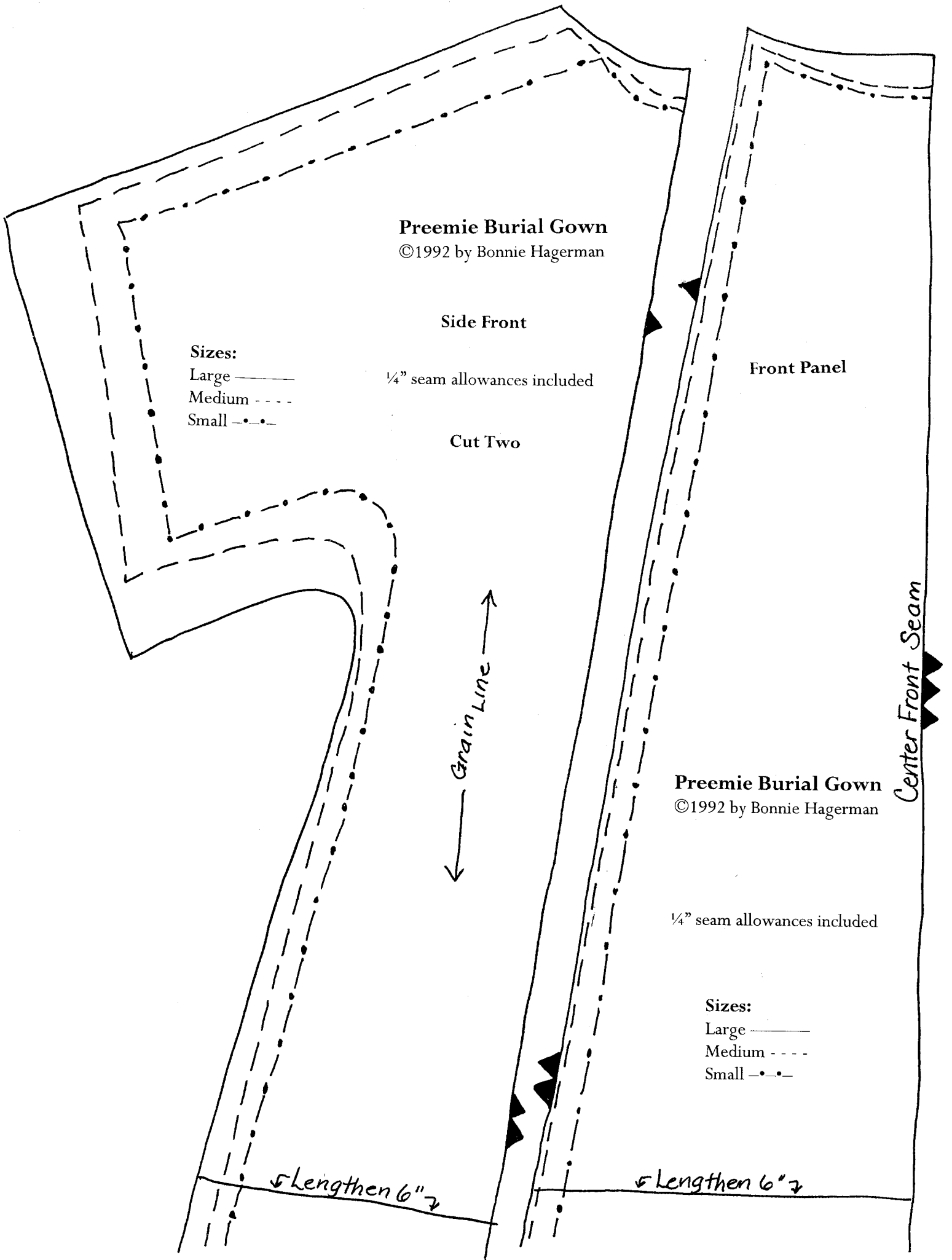
Medium - - - -

Small - · - · -

Center Front Seam

↳ Lengthen 6" ↲

↳ Lengthen 6" ↲



Preemie Burial Gown

©1992 by Bonnie Hagerman

Back
Cut Two

Sizes:
Large ———
Medium - - - -
Small - · · ·

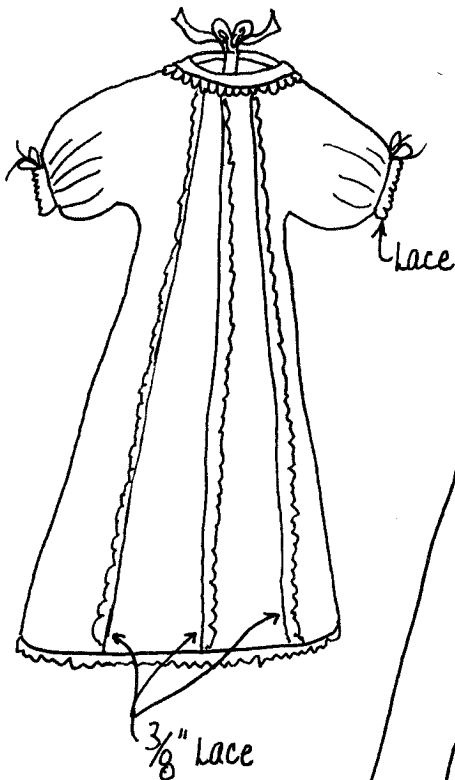
¼" seam allowances included
(Center back = ½")

Directions:

1. Pin ¾" lace to center front seam
2. Sew the 2 center front panels together (center front seam)
3. Pin lace to the notched seam of the two side front panels
4. Sew side front panel to the center front panels along notched seam
5. Press center back seam allowances to the wrong side (back is left open)
6. Sew underarm seam – attaching gown front to gown back
7. Turn under ¼" at bottom of sleeve. Attach lace and then attach elastic (4" for small, 4.5" for medium, and 5" for large) OR make a casing for a drawstring ribbon
8. Sew shoulder seam
9. Attach slightly gathered lace around neckline with lace extending down toward the gown
10. Cut a 20" length of double-fold bias tape and attach around the neckline with equal length ends extending as ties at center back
11. Hem bottom edge or attach lace

Center Back

½" Seam Allowance - Center Back - Press Under



Lengthen 6" 2